

# FLANGED ELBOWS

*EIA Standard*



Electrolink produces one of the widest ranges of RF components available in the market, like flanges, elbows, inners, connectors, reducers, and coupling elements. The material used are aluminium, brass and copper, all the surfaces are chemical or galvanic treated, like alodine for aluminium, silver or nickel plating for brass and copper. Our components are compliant with IEC 339 and EIA standard.

Electrolink can provide one of the most comprehensive common sizes of elbows. Available in a variety of dimensions, the sizes range from 7/8" EIA through 6"1/8 EIA (bigger size on request). All our elbows are produced using only the highest quality materials, to ensure long-term and reliable performance for both indoor and outdoor use.

## KEY FEATURES

- ▣ Complete range (from 7/8" up to 6"1/8)
- ▣ Highest quality materials used
- ▣ Reliable performance
- ▣ Fully compliant with IEC 339 standard
- ▣ Fully compliant with EIA standard
- ▣ Indoor and outdoor use

| PRODUCT: FLANGED ELBOWS                          |                   |
|--|-------------------|
| 7/8" EIA Flanged Elbow<br><i>P/N: 20050001</i>   | Impedance: 50 OHM |
| 1" 5/8 EIA Flanged Elbow<br><i>P/N: 20050002</i> | Impedance: 50 OHM |
| 3" 1/8 EIA Flanged Elbow<br><i>P/N: 20050003</i> | Impedance: 50 OHM |
| 4" 1/8 EIA Flanged Elbow<br><i>P/N: 20050004</i> | Impedance: 50 OHM |
| 4" 1/2 EIA Flanged Elbow<br><i>P/N: 20050005</i> | Impedance: 50 OHM |
| 6" 1/8 EIA Flanged Elbow<br><i>P/N: 20050018</i> | Impedance: 50 OHM |
| Bigger size upon request                         |                   |

# CLAMPING ELBOWS

## EIA Standard



Electrolink produces one of the widest ranges of RF components available in the market, like flanges, elbows, inners, connectors, reducers, and coupling elements. The material used are aluminium, brass and copper, all the surfaces are chemical or galvanic treated, like alodine for aluminium, silver or nickel plating for brass and copper. Our components are compliant with IEC 339 and EIA standard.

Electrolink can provide one of the most comprehensive common sizes of elbows. Available in a variety of dimensions, the sizes range from 7/8" EIA through 6"1/8 EIA (bigger size on request). All our elbows are produced using only the highest quality materials, to ensure long-term and reliable performance for both indoor and outdoor use.

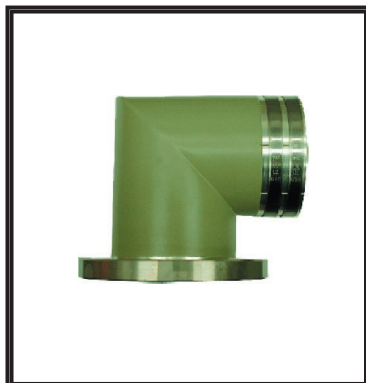
### KEY FEATURES

- ▣ Complete range (from 7/8" up to 6"1/8)
- ▣ Highest quality materials used
- ▣ Reliable performance
- ▣ Fully compliant with IEC 339 standard
- ▣ Fully compliant with EIA standard
- ▣ Indoor and outdoor use

| PRODUCT: CLAMPING ELBOWS                          |                   |
|---|-------------------|
| 7/8" EIA Clamping Elbow<br><i>P/N: 20050006</i>   | Impedance: 50 OHM |
| 1" 5/8 EIA Clamping Elbow<br><i>P/N: 20050007</i> | Impedance: 50 OHM |
| 3" 1/8 EIA Clamping Elbow<br><i>P/N: 20050008</i> | Impedance: 50 OHM |
| 4" 1/8 EIA Clamping Elbow<br><i>P/N: 20050009</i> | Impedance: 50 OHM |
| 4" 1/2 EIA Clamping Elbow<br><i>P/N: 20050010</i> | Impedance: 50 OHM |
| 6" 1/8 EIA Clamping Elbow<br><i>P/N: 20050017</i> | Impedance: 50 OHM |
| Bigger size upon request                          |                   |

# FLANGED-CLAMPING ELBOWS

*EIA Standard*



Electrolink produces one of the widest ranges of RF components available in the market, like flanges, elbows, inners, connectors, reducers, and coupling elements. The material used are aluminium, brass and copper, all the surfaces are chemical or galvanic treated, like alodine for aluminium, silver or nickel plating for brass and copper. Our components are compliant with IEC 339 and EIA standard.

Electrolink can provide one of the most comprehensive common sizes of elbows. Available in a variety of dimensions, the sizes range from 7/8" EIA through 6"1/8 EIA (bigger size on request). All our elbows are produced using only the highest quality materials, to ensure long-term and reliable performance for both indoor and outdoor use.

## KEY FEATURES

- ❑ Complete range (from 7/8" up to 6"1/8)
- ❑ Highest quality materials used
- ❑ Reliable performance
- ❑ Fully compliant with IEC 339 standard
- ❑ Fully compliant with EIA standard
- ❑ Indoor and outdoor use

| PRODUCT: FLANGED-CLAMPING ELBOWS                          |                   |
|---|-------------------|
| 7/8" EIA Flanged-Clamping Elbow<br><i>P/N: 20050011</i>   | Impedance: 50 OHM |
| 1" 5/8 EIA Flanged-Clamping Elbow<br><i>P/N: 20050012</i> | Impedance: 50 OHM |
| 3" 1/8 EIA Flanged-Clamping Elbow<br><i>P/N: 20050013</i> | Impedance: 50 OHM |
| 4" 1/8 EIA Flanged-Clamping Elbow<br><i>P/N: 20050014</i> | Impedance: 50 OHM |
| 4" 1/2 EIA Flanged-Clamping Elbow<br><i>P/N: 20050015</i> | Impedance: 50 OHM |
| 6" 1/8 EIA Flanged-Clamping Elbow<br><i>P/N: 20050016</i> | Impedance: 50 OHM |
| Bigger size upon request                                  |                   |